

timeforchildren *contactservices*
enabling families to meet together

24 Mossford Street • London • E3 4TH

Tel: 0870 241 6360

contact@timeforchildren.org

www.timeforchildren.org

timeforchildren *contactservices*



enabling families to meet together

Contact arrangements

Time for Children Contact Services are available for any children who require a safe venue for supervised and supported contact.

Our Contact Services are available to children who are involved in Private Law or Public Law matters.

- Contact for children with a parent or parents with whom they do not live.
- Contact for children with siblings from whom they are separated.
- Contact with grandparents and other relatives.

- Notes of supervised contact will be provided to relevant professionals as appropriate.

Transport can sometimes be provided for the children.

Social workers and assistant social workers facilitate and supervise contact, they all receive training and supervision from qualified and experienced social work managers.

Contact usually takes place at Time for Children Contact Centre at Mile End, London E3. The centre is easily reached by underground train to Mile End tube station, then a 4-5 minute walk. Many bus routes pass nearby.

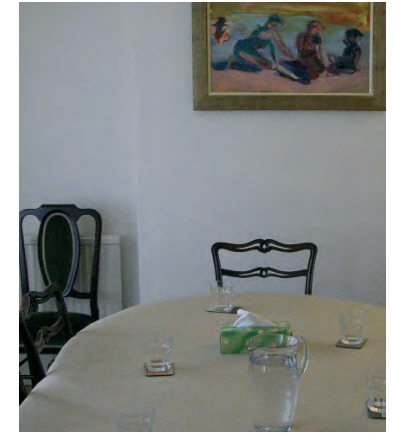
Each family will have an allocated contact room for the sole use of that family whilst they are in the building. Contact rooms all have toys, games and books for the children to use. Refreshments are provided for children and adults as appropriate to the time of day

The small garden is a shared space.

Time for Children also has a very pleasant meeting room at Mile End London E3, which can be booked for looked after children Reviews, mediation meetings and other meetings.

Enquiries are welcome from solicitors, childrens guardians and social workers.

Time for Children Contact Services will be opening more Contact Centres during the coming year.



24 Mossford Street • London • E3 4TH • Tel: 0870 241 6360

• contact@timeforchildren.org

• www.timeforchildren.org

